

## HD-SDI PTZ SPEED DOME CAMERA

## WHO-US30A

## QR CODE



Ceiling Mount Bracket Type

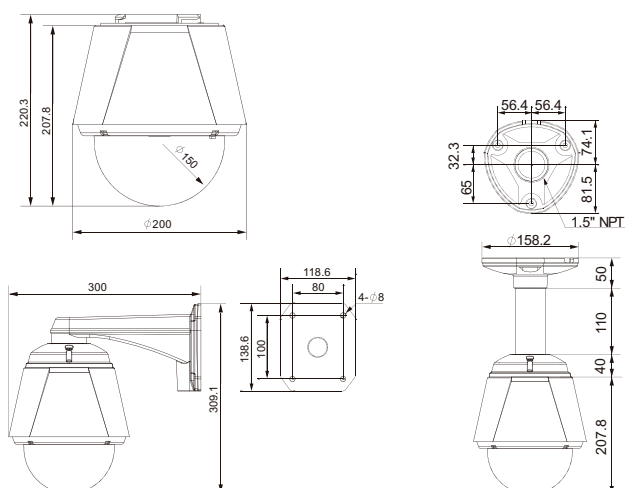


Wall Mount Bracket Type

## → KEY FEATURES

- 3.0 Mega-Pixel Resolution PTZ
- X360 Zoom Control (Optical X30 / Digital X12)
- True Day & Night with ICR (IR Cut Filter)
- WDR (Wide Dynamic Range) / NR (Noise Reduction) / Image Stabilization Function
- Minimum Illuminance (0.5 Lux @ Color / 0.005 Lux @ B/W)
- Super Speed (500°/SEC.) with 360° Endless Pan Rotation
- The Shortest Path with Vector Drive Technology
- Micro Control (0.05° /SEC.) with Micro Stepping Control Technology
- Super Video Quality with RAW Video Data
- HD-SDI Standard Support (HDcctv™ V1.0 / 1.485Gb/s SMPTE 292M)
- Simultaneous HD-SDI & Composite Output
- OSD(On-Screen Display) Menu with Password Function
- 8 Privacy Masks with Spherical Coordinates
- 8 Sets of Scheduler Function with RTC(Real Time Clock)
- 255 Presets (46 Presets reserved for Hot Keys) / 10 Swings / 4 Patterns / 8 Groups
- Frame Freeze Function
- Dual Power Input (AC 24V or DC 12V)
- Vandalproof / Weatherproof with Built-in Fan & Heater
- Waterproof (IP 67)

## → DIMENSIONS



## → SPECIFICATIONS

WHO-US30A	
Image Sensor	1/2.8" Type Exmor CMOS Sensor
Resolution	3,270K Pixels
Zoom	Optical x30 & Digital x12
Focal Length	F1.6~F4.7 / f=4.61mm (WIDE) ~ 138.3mm (TELE)
Zoom Speed	4.6sec (Wide to Tele)
Min. Working Distance	10mm (Wide) / 1200mm (Tele)
Video Signal to Noise	50dB
Angle of View	Horizontal : 57.5° (Wide) ~ 2.1° (Tele)
AE Mode	Auto / Iris / Shutter / Manual / Brightness
Iris Control	Auto / Manual (F1.6 ~ F14, Close)
Gain Control	Auto / Manual (-3dB ~ 28dB)
Shutter Control	Auto / Manual (1/1 ~ 1/10,000sec)
White Balance	Auto / Manual
Day & Night	Auto / Day / Night (ICR)
Min. Illuminance	0.5Lux (Color, 50IRE, 1/30sec) / 0.005Lux (B/W, 50IRE, 1/4 or 1/3sec)
BLC	On / Off
WDR	On / Off
Aperture	Adjustable
NR	On / Off
Privacy Zone	8 Masks with Spherical Coordinate
Image Stabilization	On / Off
Range	Pan : 360° (Endless) / Tilt : 90°
Pan / Tilt Speed	Preset : 500°/sec Manual : 0.05° ~ 360°/sec (Zoom Proportional) Swing : 10° ~ 180°/sec
Preset	255 Presets (46 Presets reserved for Hot Keys)
Pattern	4 Patterns [768 Commands (Approximate 5 Minutes) / 1 Pattern]
Swing	10 Swings
Group	8 Groups (Max. 40 Actions with The Combination of Preset, Pattern and Swing)
Scheduler Function	8 Scheduler Functions with RTC (Real Time Clock)
Other Functions	Auto Flip, Auto Parking, Power-up Action & etc.
Output	2 x BNC (HD-SDI and CVBS)
HD-SDI Standard	HDcctv™ V1.0 / 1.485Gb/s / SMPTE 292M Resolution : 1080p/30, 1080i/60, 720p/60/30
CVBS	1.0 Vp-p
RTC (Real Time Clock)	Yes (RTC Battery Backup Time : Approximate 2 Weeks)
OSD	Yes (English)
Port	RS-485 for PTZ Control
Protocol	Pelco-D, Pelco-P Selectable
Sensor Input	3 Inputs, Photo-Coupler Type, DC 5V~12V
Alarm Output	1 Output, Relay Output, Max. Load DC 24V / 1.0A or AC 125V / 0.5A
Mount Bracket	Wall Mount Bracket or Ceiling Mount Bracket
Dimension	Dome : Ø150mm / Ø5.9" Wall Mount : 200 x 408(H)mm / 7.87(Ø) x 16.1(H)" Ceiling Mount : 300(Ø) x 309(H)mm / 11.8" x 12.2(H)"
Weight	Wall Mount : Approximate 3.6kg / 7.9Lbs Ceiling Mount : Approximate 3.4kg / 7.5Lbs
Material	Dome : Poly Carbonate / Housing : Aluminum
Rated Power	Dual Power Support : DC 12V / 1.8A or AC 24V / 2.0A
Waterproof	IP 67
Fan	Always On
Heater	Operation Start from Internal Temperature 10°C / 50°F
Operating Temp.	-30°C ~ 50°C / -34°F ~ 122°F