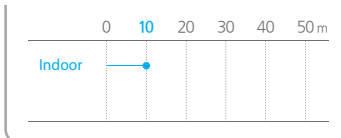


2.4MEGAPIXEL 1080P AHD 24 IR LED PLASTIC DOME CAMERA

WAPF-210D24



• IR LED VISIBILITY RANGE



• ACCESSORY (Option)

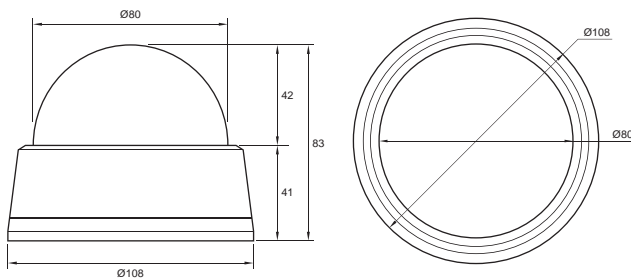


→ KEY FEATURES

- 1/2.8" 2.4Megapixel CMOS Image Sensor
- 1080P High Resolution
- 1000TVL High Definition AHD Camera
- Megapixel Fixed Lens f=3.6mm
- IR LED 24ea
- True Day & Night
- 2D+3D DNR (Digital Noise Reduction)
- D-WDR (Digital Wide Dynamic Range)
- Min. Illumination of 0.0008Lux
- Sens-up (x30)
- Auto White Balance
- Smart IR
- Defog
- LSC (Lens Shading Compensation)
- DPC (Defect Pixel Compensation)
- Motion Detection
- Privacy Mask
- Selectable TV System NTSC/PAL
- Analog CVBS Video Out
- OSD Control
- DC 12V, BNC/DC
- Ø80 Dome

→ DIMENSIONS

Unit : mm



→ SPECIFICATIONS

WAPF-210D24	
Image Sensor	1/2.8" 2.4Megapixel CMOS
Total Pixels	2000(H) x 1241(V)
Effective Pixels	1984(H) x 1225(V)
Scanning System	Progressive
Resolution	1080P / Max. 1000TVL
Video Output	Analog HD : 1080P Analog CVBS : 1280H NTSC/PAL
S/N Ratio	More than 50dB (AGC Off)
Min. Illumination	Color : 1.0Lux / BW : 0.5Lux / Color DSS : 0.002Lux / BW DSS : 0.0008Lux / IR LED On : 0Lux
Lens	Megapixel Fixed Lens f=3.6mm
IR LED	24ea
Electronic Shutter Speed	Auto / Manual (1/50(60) ~ 1/50,000sec)
Sens-up	x2 ~ x30
White Balance	ATW / AWC / Indoor / Outdoor / Manual / AWB
Auto Gain Control	0 ~ 15
BLC	Off / BLC / HSBLC
D-WDR	On / Off / Auto
Day & Night	Auto / Color / BW / EXT
2D+3D DNR	Off / Low / Middle / High
Smart IR	On / Off
LSC	On / Off
DPC	Live DPC / White DPC / Black DPC
Defog	Off / Auto
Brightness	0 ~ 100
Sharpness	0 ~ 10
Privacy Mask	Off / On (4 area)
Motion Detection	Off / On (4 area)
Mirror	Off / Mirror / V-Flip / Rotate
Operating Temperature	-10°C ~ +50°C
Operating Humidity	30% ~ 90% RH
Power Source	DC 12V (±10%)
Power Consumption	6W
Dimension	108(Ø) x 83(H)mm (Dome : Ø80)
Weight	Appx. 190g

• Design and specification are subject to change without notice.