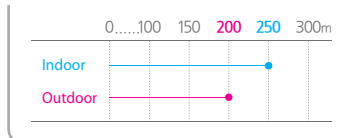


NIGHT COLOR VIDEO 2MEGAPIXEL x30 ZOOM FULL HD NETWORK IR PTZ CAMERA IG-HO2208 (IZ30)



IR LED VISIBILITY RANGE



→ KEY FEATURES

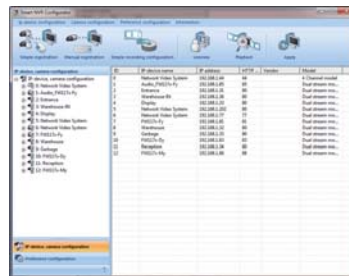
CAMERA

- 1/1.9" 2Megapixel SUPER IGUANA Sensor
- x360 Zoom Control (Optical x30 / Digital x12)
- Min. Illuminance 0.0375Lux@DSS On (Color) / 0Lux@IR Mode
- True Day & Night (ICR)
- WDR / Defog / Noise Reduction / Image Stabilization
- 8 Privacy Masks with Spherical Coordinates
- The Shortest Path with Vector Drive Technology
- Micro Control (0.1°/sec.) with Micro Stepping Control Technology
- Endless 360° Pan Rotation & Wide Tilt Rotation (-20°~90°)
- High Speed Pan/Tilt Movement (240°/sec.)
- 209 Presets / 10 Swings / 8 Patterns / 8 Groups
- Independent Preset Parameter Configuration
- Extra CVBS Output
- RS-485
- 3 Sensor Inputs / 2 Alarm Outputs
- Auto Brightness Control (Proportional to Zoom)
- Built-in Fan & Heater
- Wiper (Option)
- IP66
- IK10

NETWORK

- H.264 & M-JPEG
- Max. 60FPS@1920x1080 Resolution
- Various Compression Level
- Live Casting Max. 60FPS@1920x1080
- Triple Streaming
- 2 Way Live Audio
- Convenient Alarm Management
- Dynamic IP Support
- Various Network Protocol
- SDK Support
- ONVIF / PSIA

→ GUI



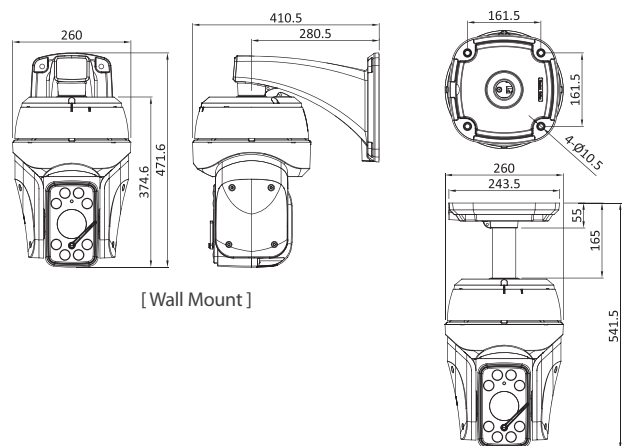
[IP Finder]



[CMS]

→ DIMENSIONS

Unit : mm



[Wall Mount]

[Ceiling Mount]

→ SPECIFICATIONS

IG-HO2208 (IZ30)

CAMERA	Image Sensor		1/1.9" 2Megapixel SUPER IGUANA Sensor
	Total Pixel		2,000K Pixels
	Zoom		Optical x30 / Digital x12
	Video Signal to Noise		More than 50dB
	Focal Length		F1.5~4.3 / f=6.0~180.0mm
	Angle of View (H)		61.2° (Wide) ~ 2.32° (Tele)
	Min. Illuminance		0.15Lux (DSS Off) / 0.0375Lux (DSS On, Color) / 0Lux (IR Mode)
	Day & Night		Auto / Day / Night (ICR)
	Focus		Auto / Manual / Semi Auto
	AE Mode		Auto / Iris / Shutter / Manual
	White Balance		Auto / Indoor / Outdoor / Manual (Red, Blue Gain Adjustable)
	BLC		On / Off
	WDR		On / Off
	Defog		On / Off
	Aperture		Adjustable
	Noise Reduction		Auto / On (1~3 Level) / Off
	Image Stabilization		On / Off
	Privacy Zone		8 Masks, Spherical Coordinate
	Pan / Tilt	Range	Pan : 360° (Endless) / Tilt : -20° ~ 90°
		Speed	Preset : 240°/sec. Manual : 0.1° ~ 240°/sec. (Proportional to Zoom) Swing : 1° ~ 90°/sec.
		Preset	209 Presets (Label, Independent Camera Parameter Setting)
		Pattern	8 Patterns (768 Commands (Approximate 5 Minutes)/Pattern)
		Swing	10 Swings
		Group	8 Groups (Max. 40 Actions with The Combination of Preset, Pattern and Swing)
		Other	Auto Flip, Auto Parking, Power-up Action and Others
	Extra Video Output		CVBS, 1.0Vp-p (NTSC / PAL)
	Communication		RS-485
	Protocol		Pelco-D
	OSD		English / Password Protection
	Sensor Input		3 Inputs, Photo-Coupler Type
	Alarm Output		2 Outputs, Relay Output, Max. Load DC 24V / 1.0A or AC 125V / 0.5A
	Audio Input / Output		Mono, Line In/Out
	Network Interface		Ethernet 10/100 Base-T (RJ-45)
	Memory Slot		Micro SD
	IR LED	Wave Length	850nm
		Brightness	Auto (Proportional to Zoom), Manual (Off ~ 127)
	Illumination Sensor		CDS Sensor
	Fan		Always On
	Heater		Automatically Turns on when its Internal Temperature is 10°C
	Wiper		Optional
	Operating Temperature		-30°C ~ 50°C / -22°F ~ 122°F
	IP / IK Rating		IP66 / IK10
	Power		AC 24V / 3.0A
	Dimension	Wall Mount	260(W) x 471.6(H) x 410.5(D)mm / 10.2(W) x 18.6(H) x 16.2(D)"
		Ceiling Mount	260(Ø) x 541.5(H)mm / 10.2(Ø) x 21.3(H)"
	Weight		7.6kg / 16.8lb
IP	Video Compression		H.264 & M-JPEG
	Audio Compression		G.711 µ-law, G.726 4bits ADPCM
	Resolution		Max. Full HD (1080p60), 1920x1080, 1280x720, 640x352, 320x176
	Compression Level		6 Levels (Low Compression / Highest / High / Normal / Low / Lowest)
	Live Casting		Up to 60FPS @ 1920x1080 Resolution
	Streaming		Triple Streaming
	Audio Support		2 Way Live Audio
	Transmission Control		CBR, VBR (32Kbps ~ 12Mbps)
	Alarm Management		[Trigger] Video Loss / Video Recovered / Motion Detection / Sensor Input / Boot / Serial / Schedule and Others [Service] Image Buffering Service (8Mbytes Pre-Post Alarm Buffer), FTP/E-Mail Notification Service
	Dynamic IP Support		Dedicated Dynamic IP Service using www.ipcctvdns.com
	Security		Password Protection for Live, PTZ, Alarm Output and Audio
	Software (IE)		Live-Cast and PTZ Control through Web Browser with Audio (Min. PC Requirement : Windows XP, 2000, Vista / IE6.x or Higher / Pentium IV 1.6GHz or Higher)
	CMS		Support Free 16 Channels, Full Featured PC NVR (Min. PC Requirement : Windows XP, 2000 / Pentium IV 1.6GHz CPU or Higher / 256 Mbytes RAM or Higher / 64 Mbytes Video Memory or Higher)
	Protocol		HTTP, TCP/UDP/IP, ARP, ICMP, RTP/RTSP, Multicast, Telnet, FTP, PPPoE, SMTP (E-Mail), DHCP, NTP, uPNP and Others / ONVIF, PSIA Support
	SDK		Open HTTP API, ActiveX for Live-Cast with Audio and PTZ
	Installation & Maintenance		Configuration : Installation Wizard, HTTP, Telnet and Console Firmware Upgrade : HTTP, Telnet+FTP
	Miscellaneous		Serial Input Data Transmission with Video, Different Time Zone Support, User-Wise Authentication Data and Time can be Synchronized with an External NTP Server, Live-Cast for up to 16 Clients

* Design and specification are subject to change without notice.