

LonTrend Profile

By Marketing Department 2022

Outline

1. Overview
2. Production Guide
 - ❑ Manufacturing Facilities
 - ❑ Quality Procedure
 - ❑ Factory Overview
 - Before assemblage
 - Assembling & Shipment
3. Capabilities
 - ❑ Manufacturing & Precision machining
 - ❑ Precision product supply & customization
4. LonTrend Product Range
5. Solutions to Various Applications

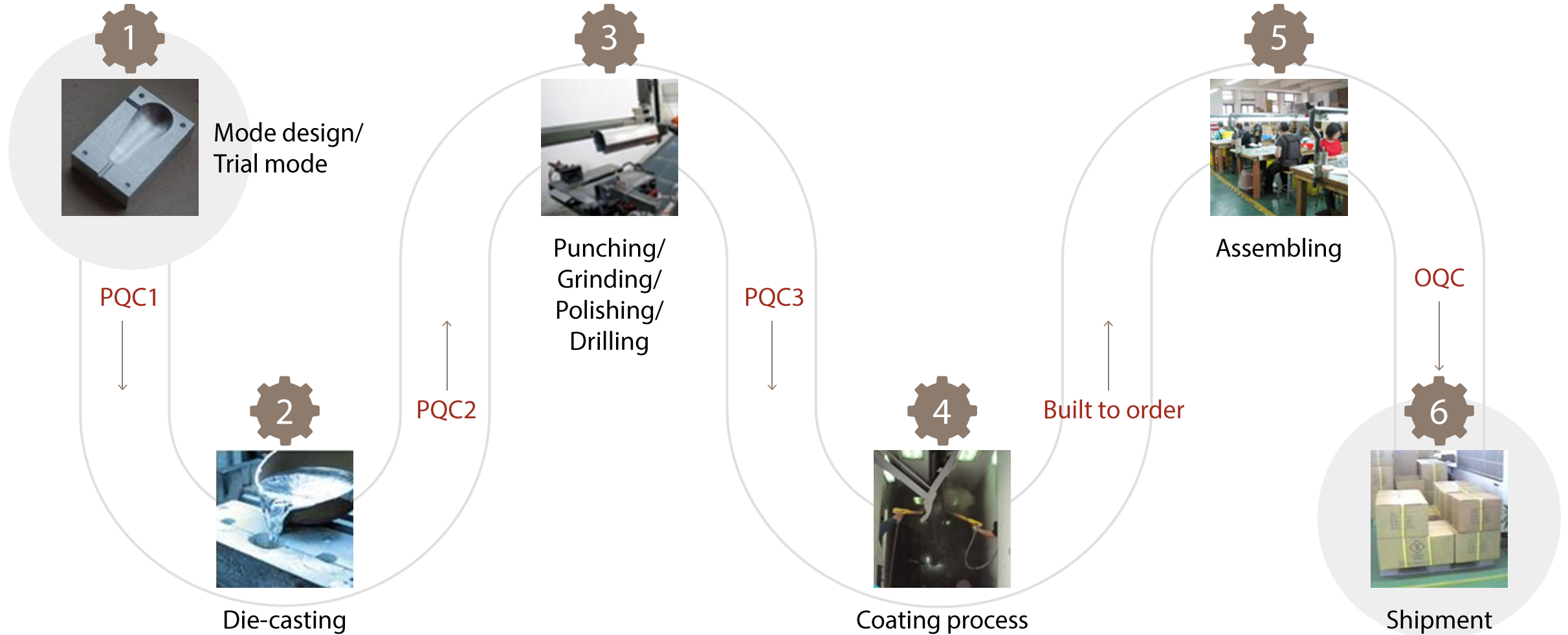
1. Overview

History	Die Cast Business Since 1985, subsidiary of Valorx from 2012
Capital (TWD)	10,000,000
R&D Engineers	23
Culture	Productivity, efficiency & quality
Business units	<ul style="list-style-type: none">▪ ODM parts▪ CCTV accessories: Enclosures & mounting brackets▪ Pan Tilt Units▪ Illuminators▪ Outsourcing
Partners	Over 53 countries
Missions	<ul style="list-style-type: none">▪ Designated brand for manufacturers around the world▪ Exquisite technology achieves perfect quality▪ Consistently strives to customer collaboration who seeks steady success
Locations	<ul style="list-style-type: none">▪ Sanchong (Headquarter – Pre-R&D/ Sales/ Marketing/ Assembly line/ Warehouse)▪ Taishan (R & D/ Assembly line)▪ Warehouse & Logistics: Shenzhen▪ PreSales: Worldwide▪ Factory: Taiwan (Taishan/ Taichong); China (Tianjin/ Jiangsu)

2. Production Guide - Manufacturing Facilities

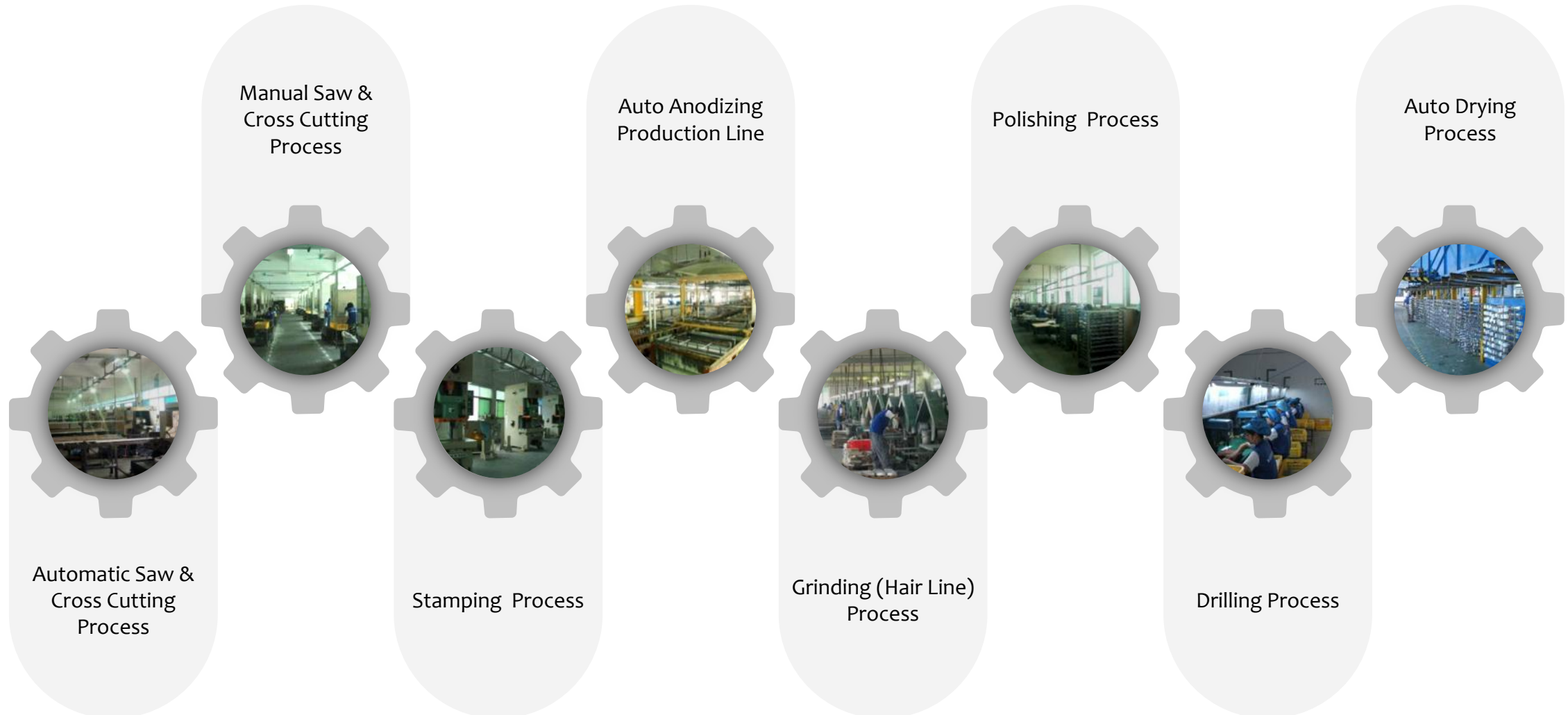


2. Production Guide - Quality Procedure



2. Production Guide - Factory Overview

Before assemblage



2. Production Guide - Factory Overview

Assembling & Shipment



3. Capabilities

Manufacturing & Precision machining

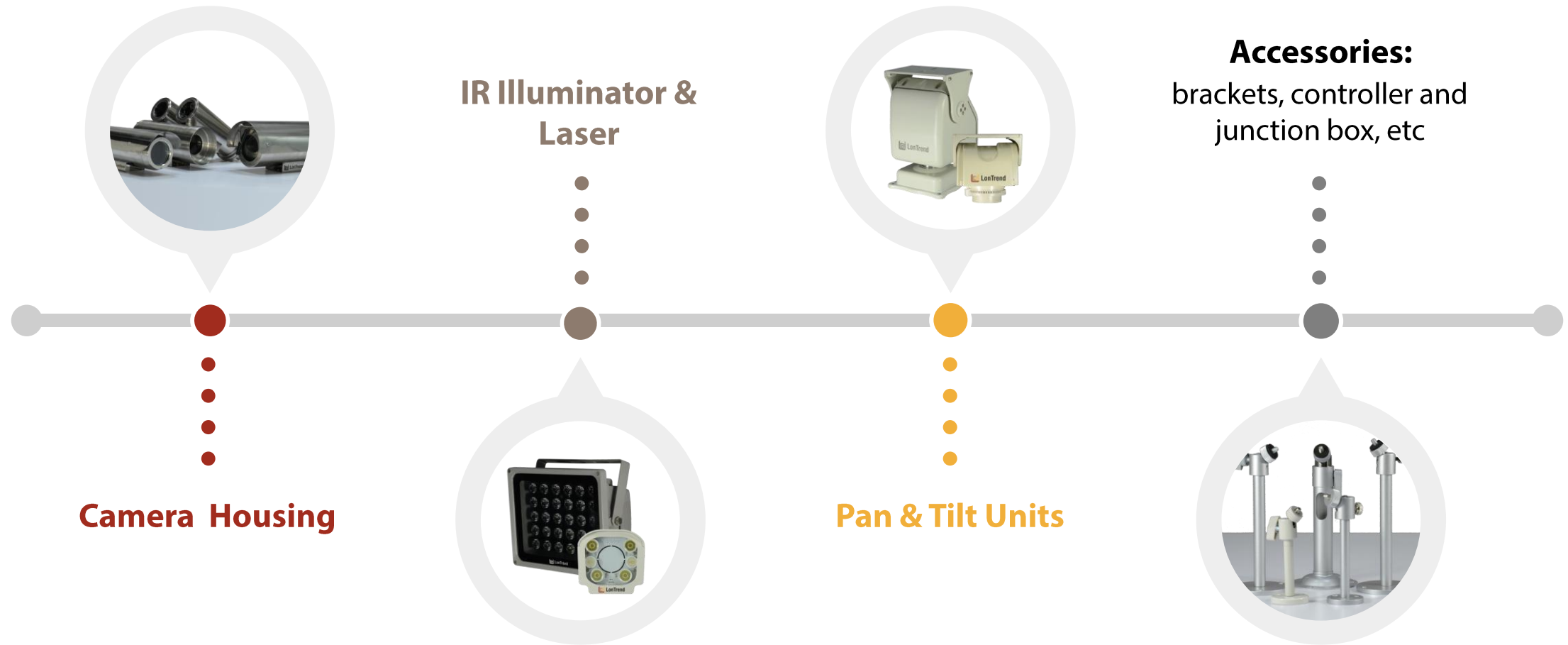
- Prototyping
 - 3D printed prototypes
 - Casting prototypes
- Molds and dies
 - Injection Molds
 - Cast Metal Molds
 - Cold Stamping Dies
 - Hot Stamping Dies
- Components and Assembly :
moldings/stampings/castings/Machined
Parts/Assembly
- Value Added Services – cost down analysis

Precision product supply & customization



4. LonTrend Product Ranges

Product Ranges



Product Ranges – by Material



Polycarbonate



Extruded aluminum



Die-cast aluminum



Stainless steel AISI 304



Stainless steel AISI 316L

Cost

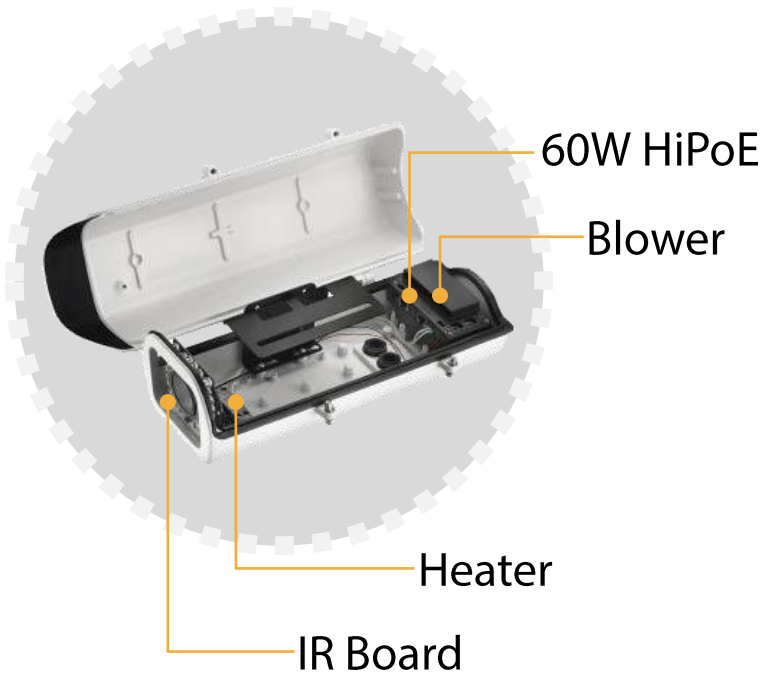
Protection level

Anti corrosive

Camera Housing

Key Customized mounting plate in Dome camera housing

Customized mounting plate in Dome camera housing



Camera Housing

Special Housings for unique applications



Extra Large
Housing



Double Window
Housing



Customized Housing
for Thermal Camera



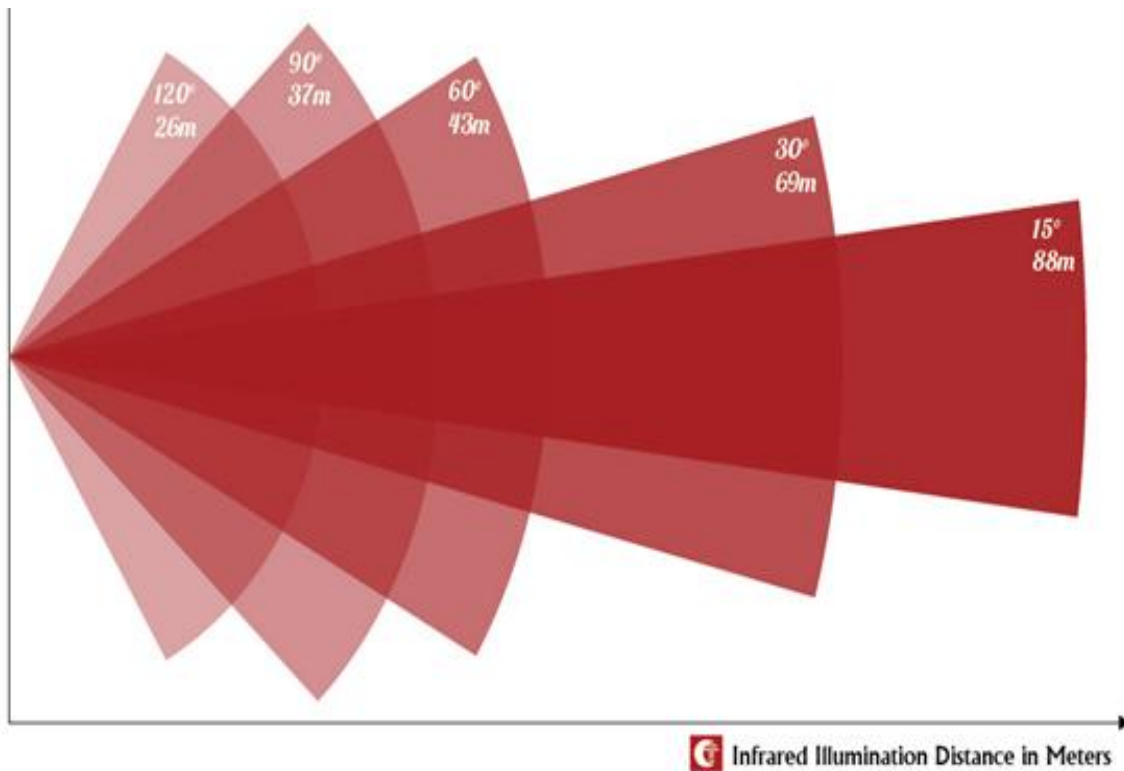
High Temperature
Protection Housing



Low Temperature
Protection Housing

IR Illuminator

Key Points: IR Illumination distance and beam angle



LTIA03-R270
270m / 15°



LTIA04-RXX-5
PoE Version



LTIA033-R540
540m / 15°-45°



LTIX03
Explosion Proof

Pan & Tilt Units



Top Load



Side Load



Double Load



Triple Load

Key Points:

- Loading capacity (from 7 kg to 80 kg)
- Analog–BNC cable / Network – Ethernet cable
- Pan tilt angle & speed
- Customization service: angle, speed, loading ways, cable leads
- Applications: camera, solar panel, speaker, wifi antenna, IR
- **Any equipment which requires pan tilt movement is suitable !**

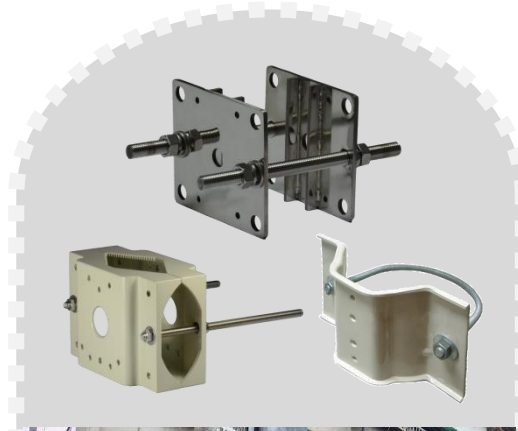
Accessories: Mount & Bracket



Wall mount



Pendant mount



Pole mount



Anti-vibration
mount

Accessories: Request for Customization

- Send us 3D drawing on below files (.stl), (.stp), (.igs)
- Confirm quantity
- Confirm material, color, surface finishing, including as much information as you can to provide you with an accurate quote.

5. Solutions to Various Applications

Oil & Gas/Chemical Plant/Industrial

Common requirements

- Explosion proof certified
- Highly corrosive
- Critical environment
- 360° view control remotely
- Dusty / rainy environment
- Double cameras (Visible + thermal)
- 24 hours monitoring

LonTrend solution

- ATEX or CNEX
- SS304 or SS316L
- IP68, sunshield, heater, blower
- Pan tilt (RS485/Pelco D), controller
- Wiper, washer
- Customized Germanium glass, appointed fully integrated camera
- Inbuilt 30 m to 100 m IR or external IR & laser



LTES07



LTEX09



LTES10



LTSX03



LTSX04

Case Study

Case requirements

- Support FLIR CF-6308
- ATEX required
- SS316L required
- Wiper required
- Washer required
- Control via camera platform
- Preset required



LonTrend solution



TSAX1730-L-W

- ATEX Exd IIC T6 Gb
- IP68
- Wiper
- SS316L
- Preset

TSAR0100

- ATEX Exd IIC T6 Gb
- IP68
- SS316L
- Preset



Marine & Seashore

Common requirements

- Highly corrosive
- Critical environment
- Dusty environment
- 360° view control remotely
- 24 hours monitoring
- Double cameras (visible + thermal)

LonTrend solution

- SS202, SS304 or SS316L
- IP66 to IP68, sunshield, heater, blower
- Wiper, washer
- Pan tilt (RS485/Pelco D) , controller
- Appointed fully integrated camera, customized Germanium glass
- Inbuilt 30 m to 100 m IR or external IR & laser



LTES07



LTEX09



LTES10



LTSX03



LTSX04

Case Study

Case requirements

- Support Axis PTZ Q6055
- IP68
- SS316L required
- Wall mount bracket required



LonTrend solution



LTEX09-L

- Customized flange height
- IP68
- SS316L
- Equipped with wall bracket



Flange

Airport & Border

Common requirements

- Longer or wider angle night view
- Larger IP66 to IP68 housing to protect longer focal lens
- Double or triple cameras with positioning function
- Easy installation
- Anti-theft

LonTrend solution

- Housing with inbuilt IR (30 m to 160 m) or external IR (up to 540 m) or laser (3 km)
- 14 inches to 29 inches housing
- Double window or triple window housing with pan tilt system
- HiPoE 60 W for 1 cable installation
- Cable management bracket design



LTEV01 + LTIA01



LTSU05



LTSU07



LTIA03

Case Study

Case requirements

- Support Avigilon H4 Bullet camera
- IR200 M, 30° angle
- AC220V power source



LonTrend solution  **LonTrend** 

LTIA03-R200-U

- Mount on bottom of camera
- Fulfill 200 m, 30° IR
- Separate 220 V AC power source



Construction site/Stadium/Parking

Common requirements

- Large space requires Long and wide night view
- Thermal camera + visible camera for better image identification
- Larger weatherproof housing for longer focal lens
- 360° view control remotely
- Limited cabling - easy installation

LonTrend solution

- Housing with inbuilt IR (30 m to 160 m/15°) or external IR (up to 540 m/30°)
- Double or triple housing design with Germanium glass customization
- Flexible housing size from 12 inches to 29 inches, cable management bracket design
- Pan tilt (RS485/Pelco D), controller
- 1 cable installation with customized mounting brackets support



LTEV01 + LTIA01



LTEG05 + LTIA04



LTEV01



LTIA04

Case Study

Case requirements

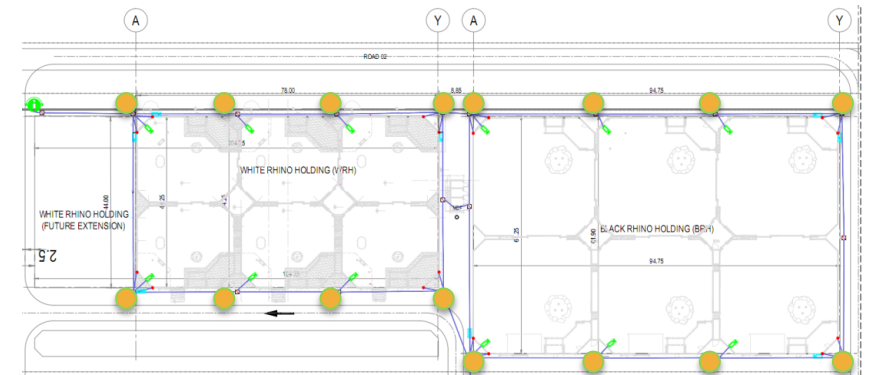
- Support Veilux V-WEB VSIP-2-I
- Required IR 150 m, 30° to 45° view
- Required Heater & blower
- HiPoE for 1 cable installation
- Cable management bracket + pole mount (diameter 200 mm)



LonTrend solution  **LonTrend** 

LTEV01-3-5 + LTIA01-R200

- Proposed 200 m, 25°/45° IR
- Inbuilt heater & blower
- Inbuilt 60 W HiPoE
- Equipped with cable management bracket and customized pole mount



 Illuminator installation site

Marine & Seashore

Common requirements

- Weatherproof housing with inbuilt IR longer than 50 m
- Wavelength
- Anti-theft
- Easy Installation

LonTrend solution

- Housing with inbuilt IR (30 m to 160 m/15°) or external IR (up to 540m/15-45°)
- White light/740 nm/850 nm/940 nm
- Cable management bracket design
- All equipments including camera sharing the same PoE inbuilt 60 W power, 1 cable installation



LTEV01



LTEG06



LTIA Series

Case Study

Case requirements

- Pelco IXE10LW box camera
- Required IR 60 m/15° view
- Required Heater & blower
- HiPoE for 1 cable installation
- Cable management bracket + pole mount



LonTrend solution



LTEV01-3-5

- Fulfill 80 m/15° IR
- Inbuilt heater & blower
- Inbuilt 60 W HiPoE
- Equipped with cable management bracket and pole mount



Police/Truck/Tank cars

Common requirements

- Integrated with mounting brackets
- Anti-vibration
- High speed rotation, large tilt angle, 360° continuous rotation
- Long IR distance
- Preset support
- 12 V DC power support

LonTrend solution

- Mounting brackets in options
- Support anti-vibration
- 0°/s to 120°/s rotation speed, +/- 90° tilt angle, 360° continuous pan rotation
- Support 100 m IR
- 226 presets, 8 tours
- Support 12 V DC



LTSU01



LTSU03



LTSU09

Case Study

Case requirements

- 20X/30X zoom lens module available
- 100°/s rotation speed
- +/- 90° tilt angle
- 360° continuous pan rotation
- 80 preset support
- 100 m IR with wiper



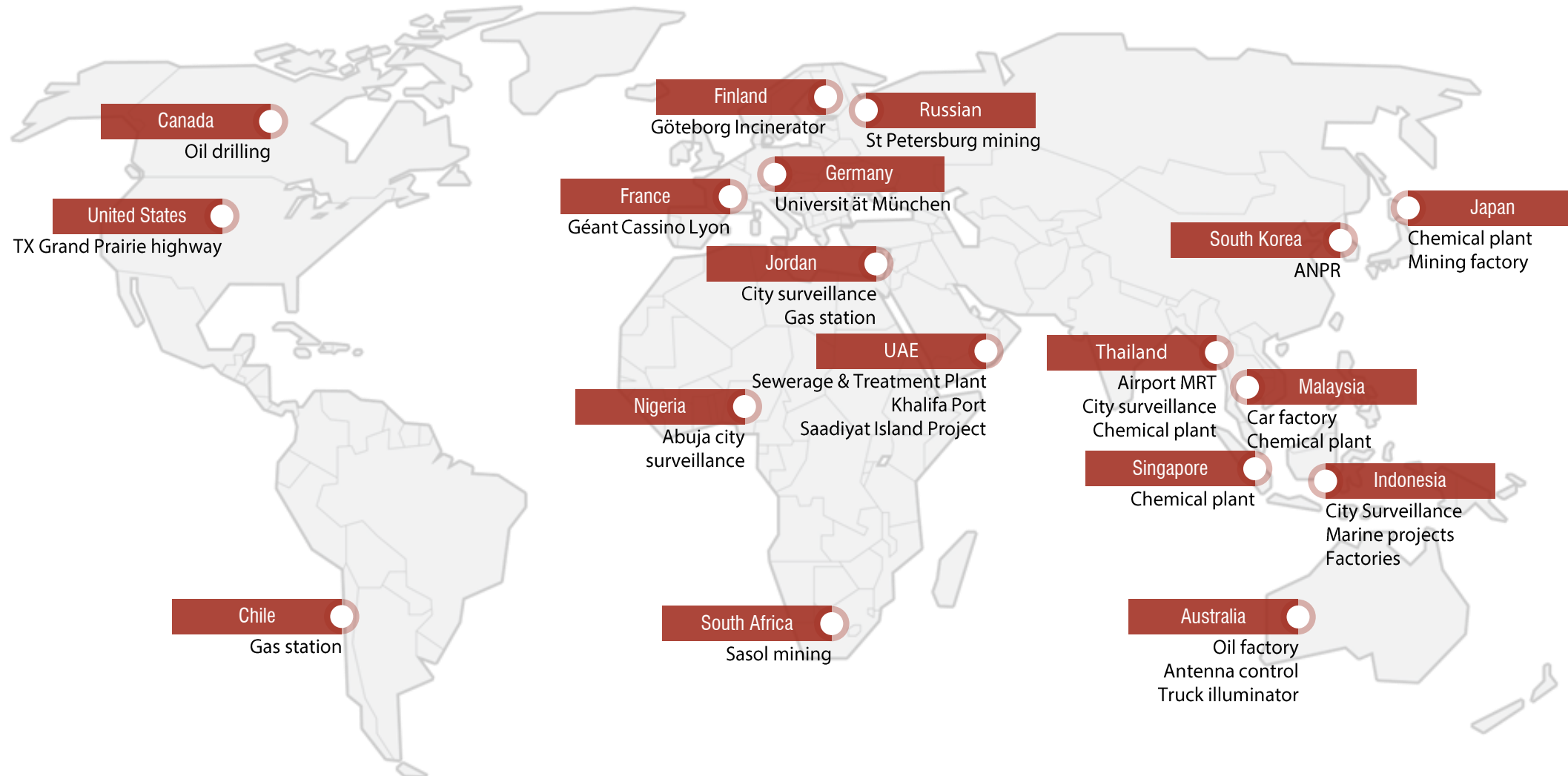
LonTrend solution  **LonTrend** *HIKVISION*

LTSU09

- Inbuilt heater & blower
- Equipped with customized mounting bracket



LonTrend Worldwide Project Experiences



Thanks for your time and attention!